

MCB 1200

Versatile Nucleic Acid Extraction Instrument

Clinically Validated

Small Footprint

Affordable



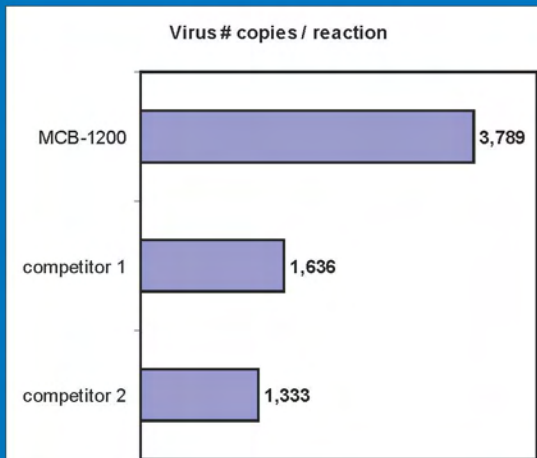
Batch or STAT Modes

12 Samples / Hour

High Purity Extracts

Precise. Proven. Published.
Clearly outperforms other extraction methods

Comparative Performance



Tang et. al., J. Clin. Microbiol., 2005, 43, 4830

Assays

- HIV-Viral RNA
- HBV DNA
- Legionella Pneumophila RNA
- CMV mRNA
- Bordetella Pertussis RNA
- Mycobacterium Tuberculosis RNA/DNA
- Mycoplasma Pneumoniae RNA

Sample Types

- Whole Blood
- Dried Blood Spots
- Serum, Plasma
- CSF
- Sputum
- Throat Swabs, Gargle
- Lung Biopsy
- Stool

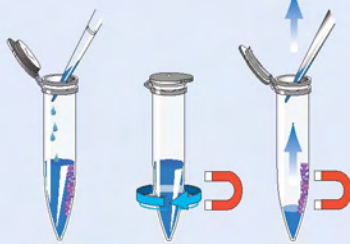
Simple to Use - Easy as 1...2...3

1 Add Sample +
Lysis Buffer +
Magnetic beads



1

2 Mix - Separate - Wash



2

3 Elute +
Aspirate NA



3

Open System

- Use Available Kits
- Use Published Protocols
- Develop Your Own



565 W. Lambert Rd, Unit B | Brea, California 92821

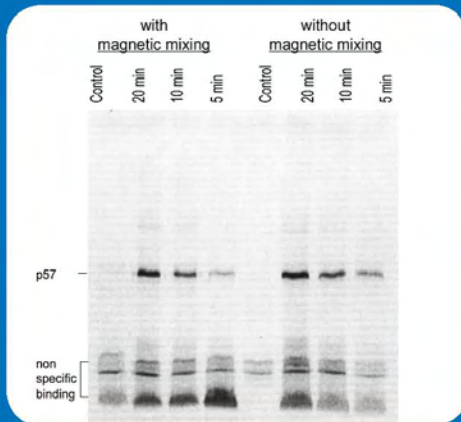
Phone: 714.990.2600 Email: ContactUs@sigris.com

www.sigris.com

MCB 1200 - Performance

Proteins

Rapidly extract expressed proteins in high yields.

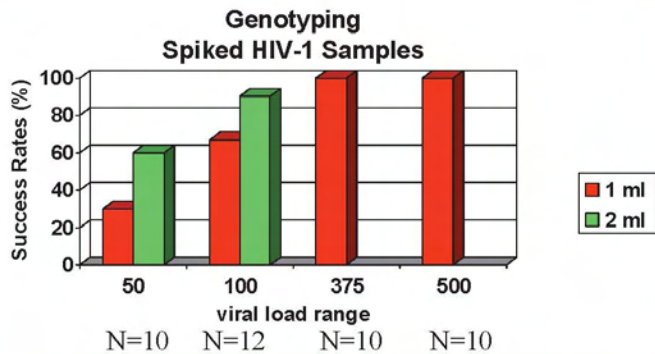


DNA

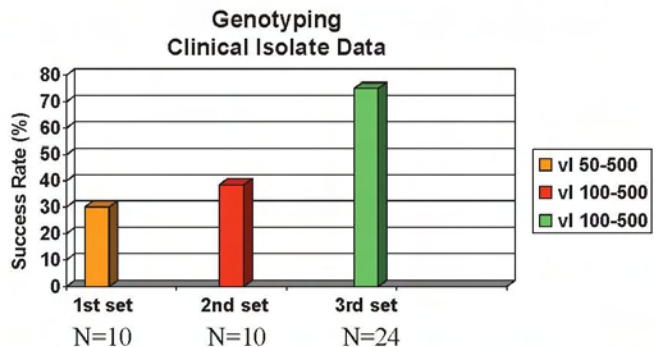
Reliably extract DNA from as few as 2000-4000 cells.



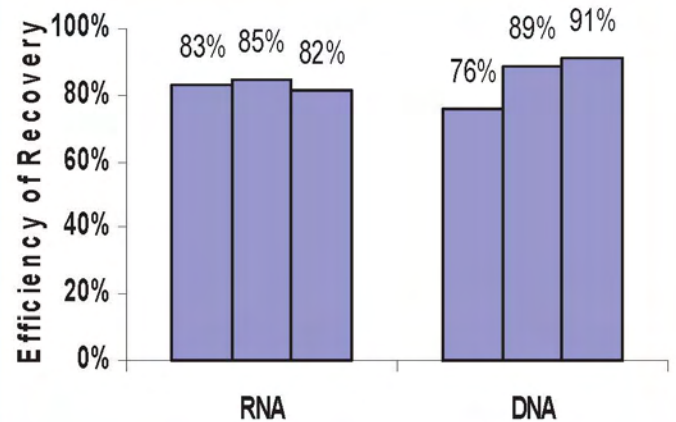
RNA



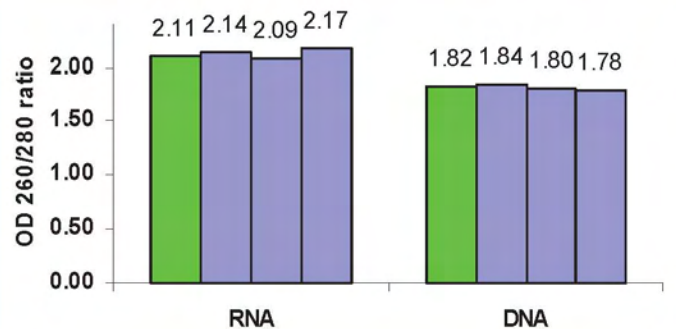
(D. McClernon, Clinical Virology Symposium, 2005)



Purity and Yield



(D. McClernon, Clinical Virology Symposium, 2005)



Specifications

Dimension: W 17" x D 4.5" x H 6.0"
Weight: 8 lbs.

Power: 24 VDC @ 120-240 VAC
Sample Vol.: < 1ml

Operating Temp: 4°C - 45°C
Eluate Vol.: > 25µl